

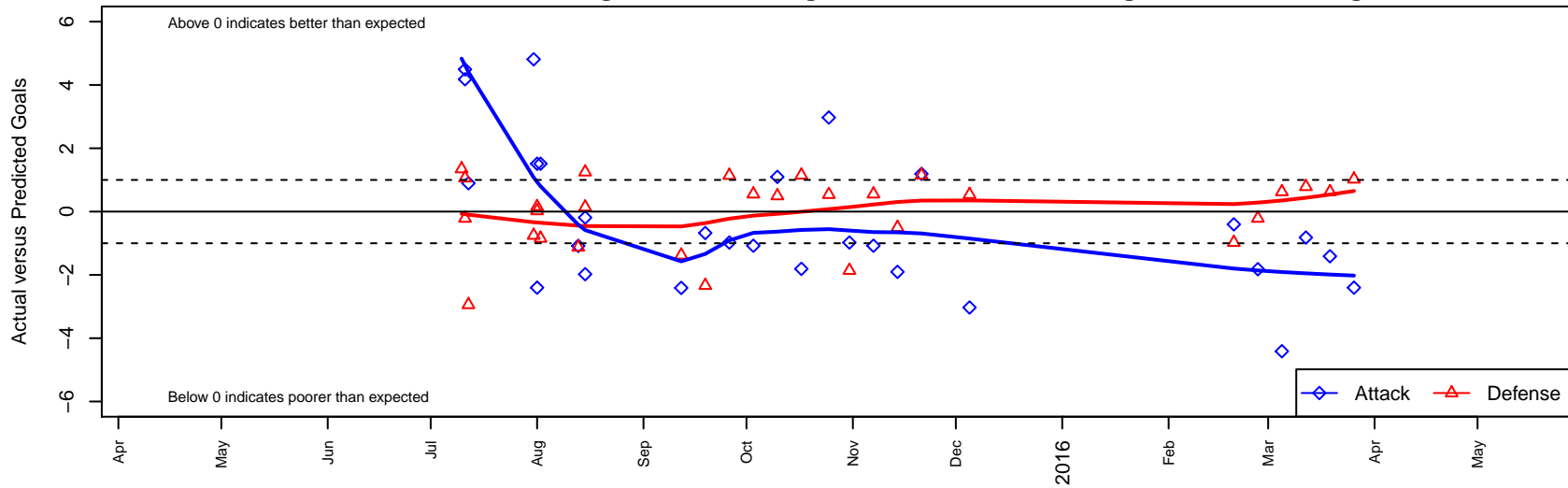
# Snohomish United Red G04

Snohomish Youth SC  
 Snohomish, WA  
 G04 total strength=291  
 attack=0.2 defense=0.15  
 fall league = NPSL Div 3 U11  
 spr league = Spr NPSL Divison 3 U11

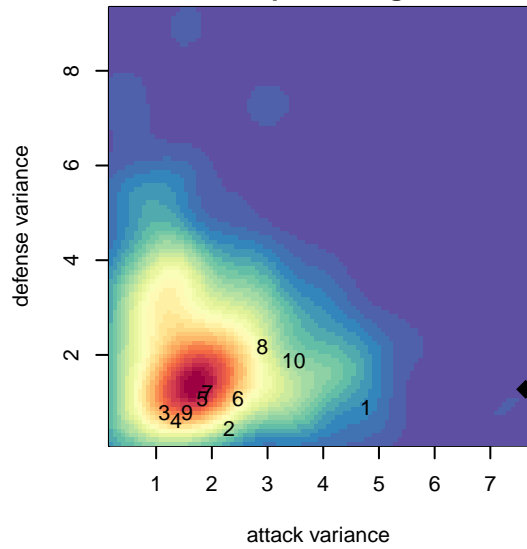
alt names used:  
 Snohomish United [G04]  
 Snohomish United G U11B  
 Snohomish United G04  
 SNOHOMISH UNITED G04 RED (WA)  
 Snohomish United G04

Venues played:  
 2015 KCC GU11 Silver  
 2015 Strawberry Classic GU11  
 2015 Bigfoot Silver A U11  
 2015 NPSL Division 3 U11  
 2015 Spr NPSL Divison 3 U11

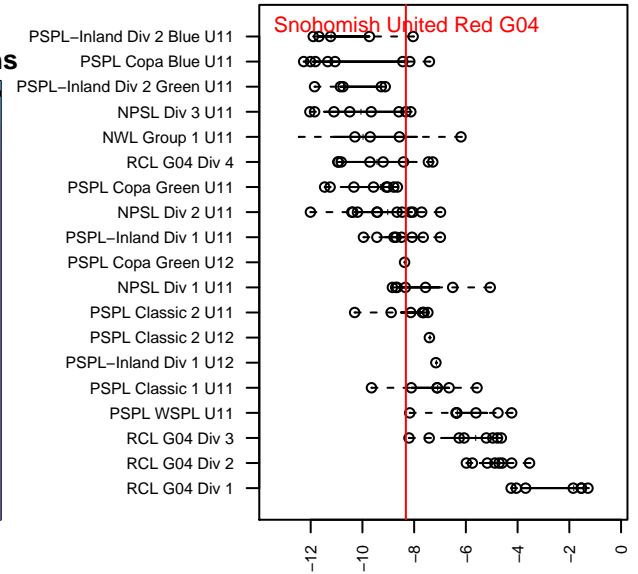
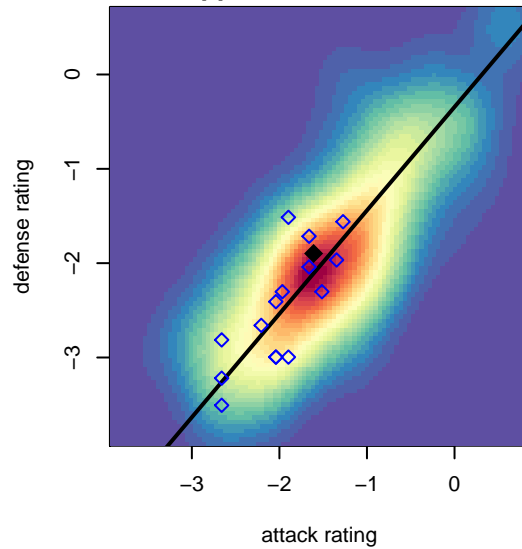
**Snohomish United Red G04**  
 Dots are actual minus expected GF (blue circles) and GA (red triangles).  
 Blue line is smoothed change in attack strength. Red is smoothed change in defense strength.



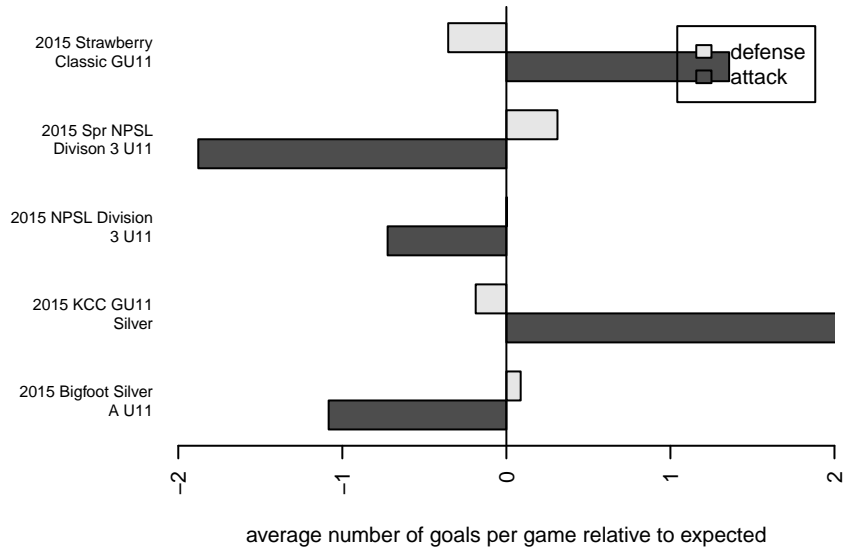
**attack and defense variance (black dot)  
relative to other teams  
and top 10 in region**



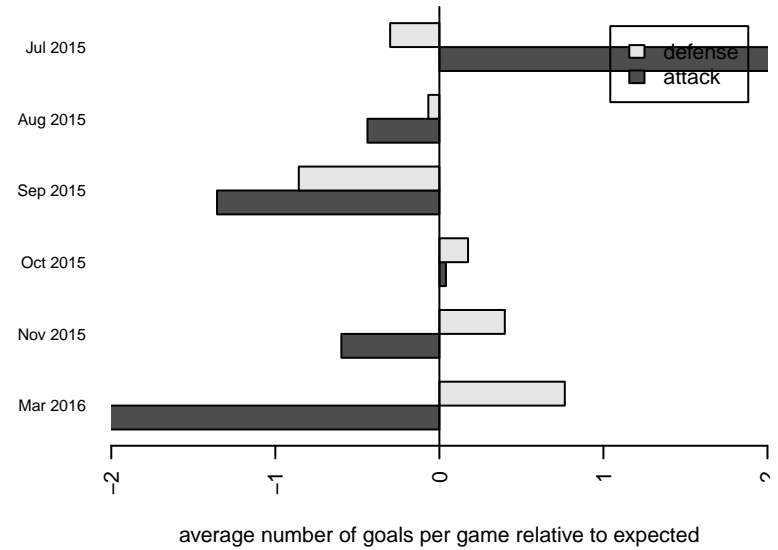
**attack and defense rating  
relative to others at age  
and all opponents in last 13 months**



**Performance relative to 13 month average**



**Performance relative to 13 month average**



date	home		away		venue	pred.home	pred.away
2016-03-26	Snohomish United Red G04	3	North Whidbey Islanders G04	0	2015 Spr NPSL Divison 3 U11	5.40	1.02
2016-03-19	Kent United White G04	0	Snohomish United Red G04	5	2015 Spr NPSL Divison 3 U11	0.62	6.41
2016-03-12	Crossfire Select Jordan G04	0	Snohomish United Red G04	3	2015 Spr NPSL Divison 3 U11	0.79	3.82
2016-03-05	Snohomish United Red G04	2	Kent United White G04	0	2015 Spr NPSL Divison 3 U11	6.41	0.62
2016-02-27	Snohomish United Red G04	2	Crossfire Select Jordan G04	1	2015 Spr NPSL Divison 3 U11	3.82	0.79
2016-02-20	North Whidbey Islanders G04	2	Snohomish United Red G04	5	2015 Spr NPSL Divison 3 U11	1.02	5.40
2015-12-05	Snohomish United Red G04	1	Storm King G04	0	2015 NPSL Division 3 U11	4.03	0.54
2015-11-21	Tracyton G04	0	Snohomish United Red G04	6	2015 NPSL Division 3 U11	1.15	4.81
2015-11-14	Snohomish United Red G04	0	Sky River SC Funky Monkeys G04	2	2015 NPSL Division 3 U11	1.90	1.50
2015-11-07	Snohomish United Red G04	6	MIFC Hornets G04	0	2015 NPSL Division 3 U11	7.08	0.55
2015-10-31	Southlake Select White G04	3	Snohomish United Red G04	2	2015 NPSL Division 3 U11	1.14	2.98
2015-10-25	Storm King G04	0	Snohomish United Red G04	7	2015 NPSL Division 3 U11	0.54	4.03
2015-10-17	Snohomish United Red G04	3	Tracyton G04	0	2015 NPSL Division 3 U11	4.81	1.15
2015-10-10	Sky River SC Funky Monkeys G04	1	Snohomish United Red G04	3	2015 NPSL Division 3 U11	1.50	1.90
2015-10-03	MIFC Hornets G04	0	Snohomish United Red G04	6	2015 NPSL Division 3 U11	0.55	7.08
2015-09-26	Snohomish United Red G04	2	Southlake Select White G04	0	2015 NPSL Division 3 U11	2.98	1.14
2015-09-19	Snohomish United Red G04	1	HSA Select G04	4	2015 NPSL Division 3 U11	1.68	1.67
2015-09-12	Kent United White G04	2	Snohomish United Red G04	4	2015 NPSL Division 3 U11	0.62	6.41
2015-08-15	Southlake Select White G04	1	Snohomish United Red G04	1	2015 Bigfoot Silver A U11	1.14	2.98
2015-08-15	PSA Force G04	1	Snohomish United Red G04	2	2015 Bigfoot Silver A U11	2.25	2.19
2015-08-13	Crossfire Select Gordan G04	3	Snohomish United Red G04	1	2015 Bigfoot Silver A U11	1.87	2.08
2015-08-02	Snohomish United Red G04	4	NSC Fury G04	2	2015 Strawberry Classic GU11	2.49	1.15
2015-08-01	NSC Fury G04	1	Snohomish United Red G04	4	2015 Strawberry Classic GU11	1.15	2.49
2015-08-01	North Whidbey Islanders G04	1	Snohomish United Red G04	3	2015 Strawberry Classic GU11	1.02	5.40
2015-07-31	PSA Force G04	3	Snohomish United Red G04	7	2015 Strawberry Classic GU11	2.25	2.19
2015-07-12	Eastside FC Grey G04	6	Snohomish United Red G04	2	2015 KCC GU11 Silver	3.06	1.10
2015-07-11	Snohomish United Red G04	9	Southlake Select Red G04	0	2015 KCC GU11 Silver	4.51	1.06
2015-07-11	Crossfire Select Jordan G04	1	Snohomish United Red G04	8	2015 KCC GU11 Silver	0.79	3.82

<b>date</b>	<b>home</b>		<b>away</b>		<b>venue</b>	<b>pred.home</b>	<b>pred.away</b>
2015-07-10	Cascade FC Green G04	0	Snohomish United Red G04	10	2015 KCC GU11 Silver	1.35	1.8